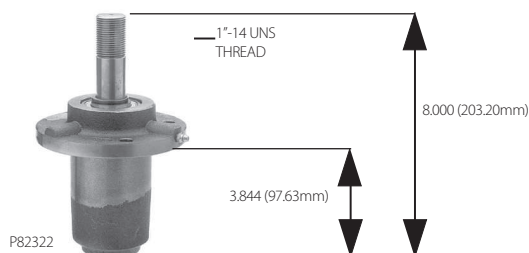


DIXIE CHOPPER

Part # P82322

- Spindle assembly - short shaft
 - Fits 50" & 60" rider
 - Outside spindle
- Replaces *Dixie Chopper 10161*



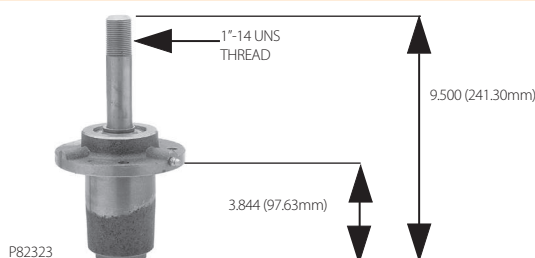
Part # P82324

- Spindle shaft - short
 - For spindle assembly P82322
 - 1" diameter shaft
- Replaces *Dixie Chopper 30217*



Part # P82323

- Spindle assembly - long shaft
 - Fits 50" & 60" rider
 - Center spindle
- Replaces *Dixie Chopper 10161-L*



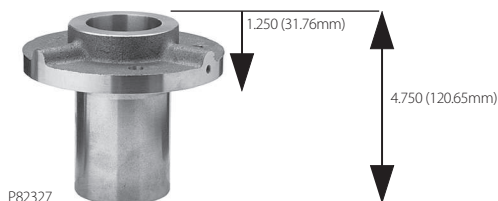
Part # P82326

- Spindle shaft - long
 - For spindle assembly P82323
- Replaces *Dixie Chopper 30217-L*



Part # P82327

- Spindle housing only
 - For P82323 and P82322
- Replaces *Dixie Chopper 30241*



Part # SA12808

- Spindle Assembly
 - Spindle housing with bearings, seals, long shaft
- Replaces *Dixie Chopper 300442*



Part # SA12806

- Spindle housing
 - With bearings and seals
- Replaces *Dixie Chopper 300440*



DIXIE CHOPPER continued

Part # SA12807

- Spindle Assembly
 - Spindle housing with bearings, seals, short shaft
- Replaces **Dixie Chopper 300441**



Part # SA10177

- Spindle Housing
 - Fits "Zero Turn" riding mowers
- Replaces **Dixie Chopper 30241**



ENCORE

Part # P82329

- Spindle assembly
 - For 48", 52" and 60" decks
 - Overall height: 7-1/2"
 - 12 splines
 - 3/4-16 thread
- Replaces **Encore 363379**



Part # P82330

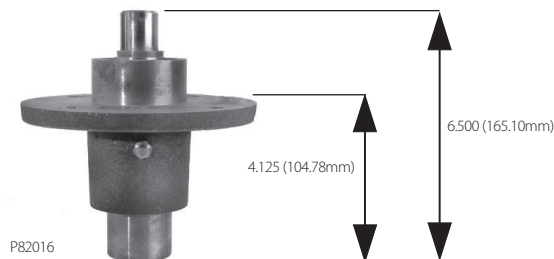
- Spindle assembly
 - Fits ZS and FC models
 - For 42", 48", 52" and 61" cut decks
 - Overall height: 6"
 - 12 splines, 3/4-16 thread
- Replaces **Encore 583106**



EXCEL

Part # P82021

- Spindle assembly
 - Fits Super Z with 52", 60", 72" decks
 - Cast iron housing
- Replaces **Excel 350595**



Part # P82335

- Spindle assembly
 - Fits Fast Trak, Mini-Z and Super Mini-Z
- Replaces **Excel 783506**



EXMARK

Part # P82316

- Spindle assembly with short shaft
- Fits 32" and 36" decks
- Fits 48" deck - outside spindles
- 5-1/8" shaft length

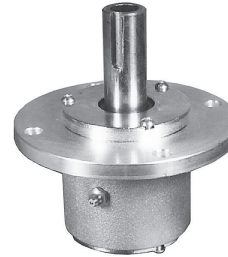
Replaces **Exmark 302030**



Part # P82317

- Spindle assembly with long shaft
- Fits 48" deck with long shaft
- Center spindle
- 5-3/4" shaft length

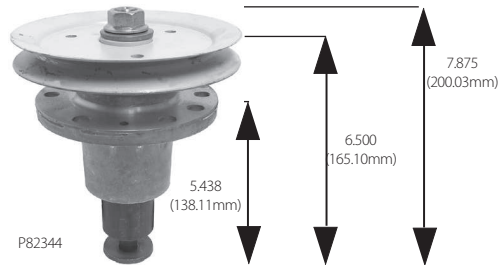
Replaces **Exmark 402006**



Part # P82344

- Spindle assembly
- Fits 48", 52" & 60" Lazer Z HP

Replaces **Exmark 103-1140**



Part # P82345

- Spindle assembly
- Fits 52" Lazer Z HP

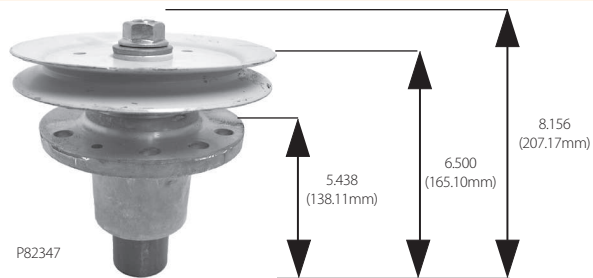
Replaces **Exmark 103-1184**



Part # P82347

- Spindle assembly
- Fits 60" Lazer Z XP series

Replaces **Exmark 103-3200**

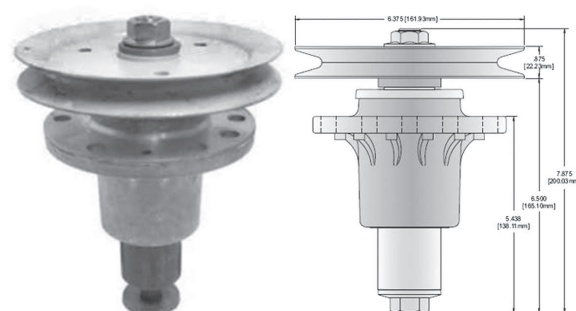


Part # EX13130

- Spindle assembly
- Fits 48" decks on Lazer Z HP models

Replaces **Exmark 103-1140**

NEW!

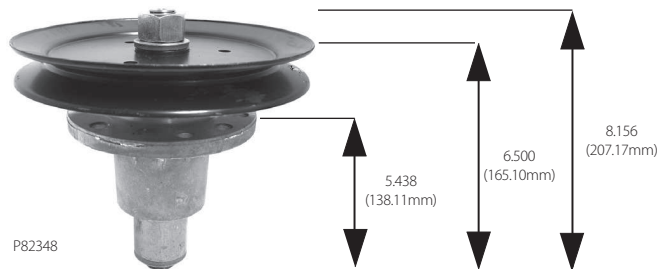


Spindle Assemblies

EXMARK continued

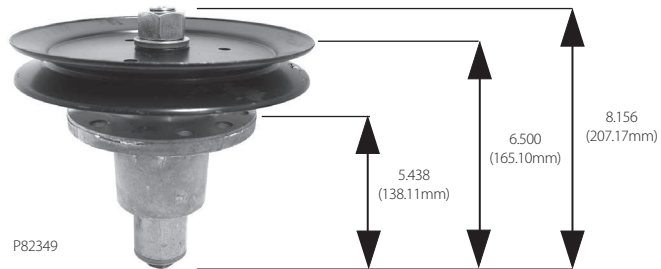
Part # P82348

- Spindle assembly
 - Fits 72" Lazer Z XP series models
 - Serial number 252,000 and up
- Replaces **Exmark 103-3206**



Part # P82349

- Spindle assembly
 - Fits 72" Lazer Z models
- Replaces **Exmark 644092**



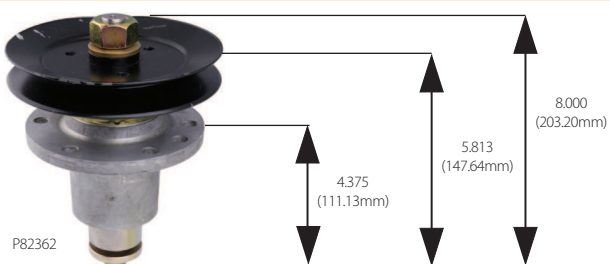
Part # P82022

- Spindle housing assembly
 - Includes bearings
 - Fits Lazer Z, Metro, Viking, Turf Tracer and Turf Ranger
 - Pulley and shaft not included
- Replaces **Exmark 103-2547**



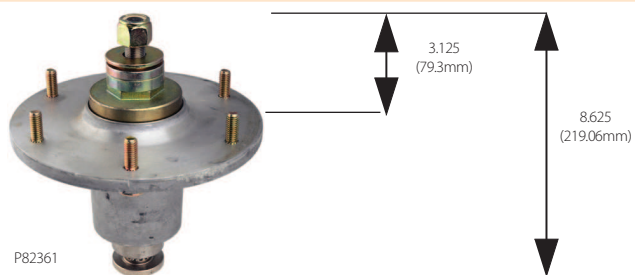
Part # P82362

- Spindle assembly
 - Fits Lazer CT, Lazer HP with serial #'s above 540,000
- Replaces **Exmark 103-9081**



Part # P82361

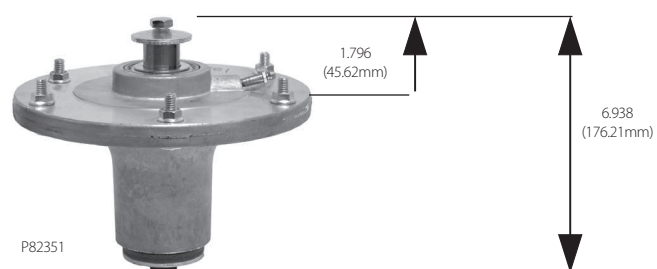
- Spindle assembly
 - Fits Lazer Z and Lazer HP with serial #'s above 600,000
- Replaces **Exmark 109-2102**



GRASSHOPPER

Part # P82351

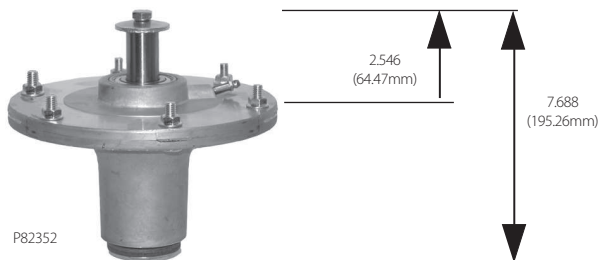
- Spindle assembly
 - Fits 52" and 61" models 9852 & 9861
 - Right and left spindles
- Replaces **Grasshopper 623781**



GRASSHOPPER continued

Part # P82352

- Spindle assembly
 - Fits 52" and 61" models 9652 and 9661
 - Center assembly
- Replaces **Grasshopper 623782**



Part # P82353

- Spindle assembly
 - Fits 52" and 61" models 9652 and 9661
 - Fits 48" model 9548
 - Left and center assembly
- Replaces **Grasshopper 623783**



GRAVELY

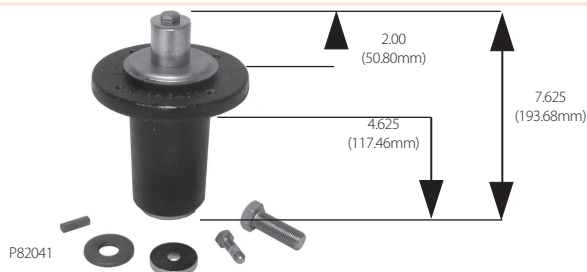
Part # P82040

- Fits ZT series riders
- Replaces **Gravelly 51510000**



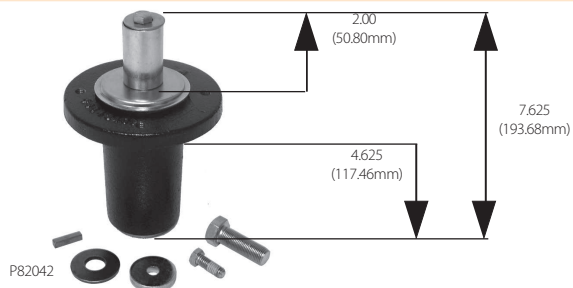
Part # P82041

- Outer spindle assembly fits PM series riders
- Replaces **Gravelly 59201000**



Part # P82042

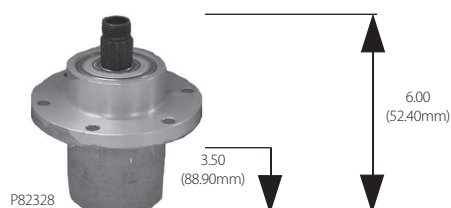
- Center spindle assembly fits PM series riders
- Replaces **Gravelly 59202600**



GREAT DANE

Part # P82328

- Spindle assembly
- Replaces **Great Dane D18030**



Spindle Assemblies

GREAT DANE continued

Part # P85030

- Spindle shaft
 - For our part # P83328
- Replaces **Great Dane D18048**



Part # SA12778

- Spindle assembly
 - Fits latest models
 - New heavy duty style with mounting studs
- Replaces **Great Dane 200262**



HUSTLER

Part # SA11452

- Spindle assembly
 - Fits Fast Trak, Mini Z and Super Mini Z models
- Replaces **Excel/Hustler 783506**



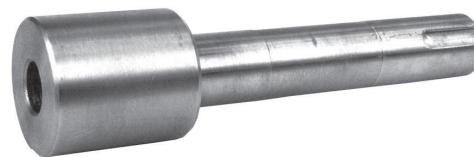
Part # SA12459

- Spindle assembly
 - Fits Super Z with 52", 60" and 72" decks
 - Cast iron housing
- Replaces **Hustler 796235**



Part # SA12491

- Spindle shaft
- Fits Super Z with 52", 60" and 72" decks
- Replaces **Hustler 796227**



Part # SA12241

- Spindle assembly
 - Fits Super Z with 52", 60" and 72" decks
 - Cast iron housing
- Replaces **Hustler 350595**



HUSTLER continued

Part # SA12833

- Spindle shaft
 - Fits Super Z with 52", 60" and 72" decks
- Replaces **Hustler 788547**



JOHN DEERE

Part # JD13385

- Spindle assembly
 - Fits Z-TRAK mowers
- Replaces **John Deere TCA17517**

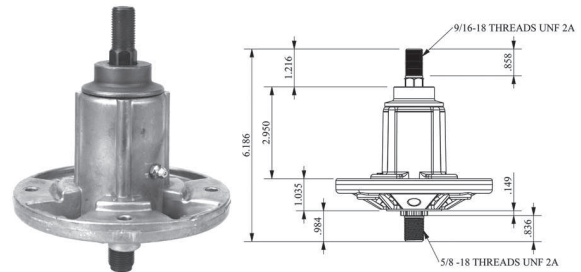
NEW!



Part # JD12495

- Spindle assembly
 - For LA150 and LA175, G110, 190C mowers with 54" deck
 - 7 point spline
- Replaces **John Deere GY21099, TY20867**

NEW!



Part # JD12910

- Spindle assembly
 - Fits LA100 - LA165 series mowers since 2006
 - 7 point spline
 - Used on 42", 48", 54" decks
- Replaces **John Deere GY21098, GY20454, GY20962**

NEW!



Part # JD13234

- Spindle housing assembly
 - Fits EX-TRAK
 - Fits models X300, X300R, X304, Z225 and Z245
- Replaces **John Deere AM136733**

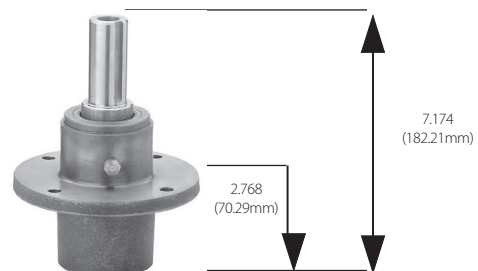
NEW!



SCAG

Part # P82325

- Spindle assembly
 - Fits all Scag mowers using cast iron spindle assemblies
- Replaces **Scag 46631**

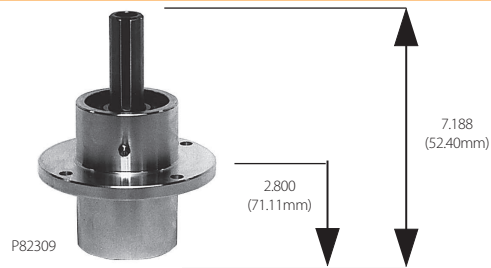


Spindle Assemblies

SCAG continued

Part # P82309

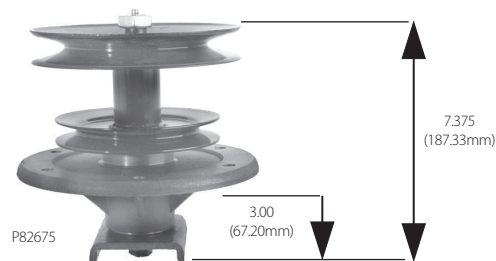
- Spindle assembly
- Replaces *Scag 46020; Ferris 1530301; Encore 71460007; Wright Stander*



TORO

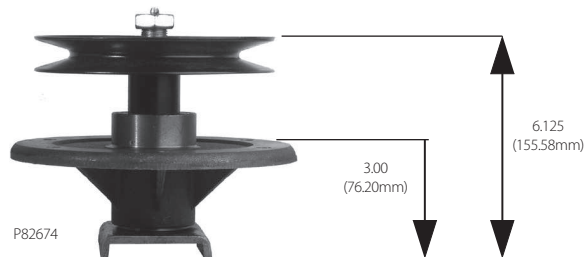
Part # P82675

- Center spindle assembly
 - Fits 62" Z models, center
- Replaces *Toro 105-1688*



Part # P82674

- Spindle assembly
 - Fits 52" Z models
- Replaces *Toro 100-3976*



Part # P82676

- Outer spindle assembly
 - Fits 62" Z models
- Replaces *Toro 99-4640*



WALKER

Part # P82050

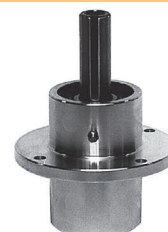
- Spindle assembly
- Replaces *Walker 8052*



WRIGHT

Part # P82309

- Spindle assembly
- Replaces *Wright 71460007*



SP SYSTEMS

SP® PROFESSIONAL

- Recommended for landscaping, golf course maintenance, forestry, pest control, arborists, custom applications
- Leading edge technology set industry standard for performance, comfort and safety
- Blow molded tanks ergonomically designed for comfort
- Padded shoulder straps embedded into tank follow body contours and eliminate stress points
- Exceptional durability and lasting use

YARD TENDER® COMMERCIAL

- Recommended for home and property owners, use in deck cleaning, applying stains and sealers, spraying chlorine based products, orchards and fruit trees and more
- Built to rigorous commercial standards with quality, durability and easy maintenance

Part # SP1



Part # YT189



Specifications

Type:	Backpack	Backpack
Working Capacity:	4 Gallons	4 Gallons
Maximum Pressure:	70 psi	168 psi
Working Pressure:	15-60 psi	15-168 psi
Seals/O-Rings:	Hybrid Viton/Nytril	Viton/Nytril
Shipping Weight:	13 lbs.	13 lbs.
Pump Type:	Sealed Diaphragm	Internal Piston
Patented Pump:	Patented Pump	
Repairable Pump:	No	Repairable Pump
Use		
Herbicides (i.e. Round-Up):	Herbicides	Herbicides
Insecticides/Pesticides:	Insecticides/Pesticides	Insecticides/Pesticides
Fertilizers:	Fertilizers	Fertilizers
Chlorine-based:	No	Chlorine-based*
Diesel:	Diesel	Diesel
Wettable Powders:	No	Wettable Powders
Viscous:	Viscous	
Comes With		
Wand:	20" Brass Wand	20" Brass Wand
Hose:	47" Industrial Hose	51" Industrial Hose
Tank Mouth:	6" Tank Mouth	6" Tank Mouth
Pump Handle:	Solid Steel Pump Handle	Tubular Steel Pump Handle
Pump Handle Grip:	Pump Handle Grip	Pump Handle Grip
Lid Carrying Handle:	Lid Carrying Handle	Lid Carrying Handle
Tank Mouth Strainer:	Tank Mouth Strainer	Tank Mouth Strainer
Adjustable Brass Nozzle:	Adjustable Brass Nozzle	Adjustable Brass Nozzle
Fan Nozzle:	Fan Nozzle	Fan Nozzle
Pistol Grip & Filter:	Pistol Grip & Filter	
Straps:	Ex. Hvy. Padded Adjustable Straps	Shoulder Pads
Wand Storage:	Wand Storage	Wand Storage Clips
Agitation:	With Kit 34 (optional)	Agitation

* Permanent damage will occur if sprayer is not cleaned properly after each use with Chlorine

SP SYSTEMS continued

ESTATE KEEPER® AGRICULTURAL SERIES

- Recommended for agricultural and other uses such as green houses and nurseries
- Deliver highest level of performance, safety and durability to the economy minded professional user
- Features patented diaphragm and piston pumps
- High grade Viton seals and o-rings in key areas of operation

Part # FH528



Part # FH477



Part # FH10/FH20



Specifications

Type:	Backpack	Backpack	Compression
Working Capacity:	4 Gallons	4 Gallons	1 Gallon - 2 Gallons
Maximum Pressure:	120 psi	70 psi	80 psi
Working Pressure:	15-120 psi	15-70 psi	10 - 80 psi
Seals/O-Rings:	Viton/Nytril	Viton/Nytril	Viton/Nytril/GB
Shipping Weight:	13 lbs.	13 lbs.	6 lbs./8 lbs.
Pump Type:	External	Diaphragm	12" Compression
Patented Pump:	No	Patented Pump	No
Repairable Pump:	Repairable Pump	No	Repairable Pump
Use			
Herbicides (i.e. Round-Up):	Herbicides	Herbicides	Herbicides
Insecticides/Pesticides:	Insecticides/Pesticides	Insecticides/Pesticides	Insecticides/Pesticides
Fertilizers:	Fertilizers	Fertilizers	Fertilizers
Chlorine-based:	No	No	Chlorine*
Diesel:	Diesel	Diesel	Diesel
Wettable Powders:	With Kit 34 (optional)	With Kit 34 (optional)	No
Viscous:	No	Viscous	No
Comes With			
Wand:	16" Brass Wand	16" Brass Wand	16" Brass Wand
Hose:	47" PVC 1/4" Hose	47" PVC 1/4" Hose	47" PVC 1/4" Hose
Tank Mouth:	6" Tank Mouth	6" Tank Mouth	4.5" Tank Mouth
Pump Handle:	Tubular Steel Pump Handle	Tubular Steel Pump Handle	Plastic Pump Handle
Pump Handle Grip:	No	No	No
Carrying Handle:	No	No	Carrying Handle
Tank Mouth Strainer:	No	No	No
Fan Nozzle:	Fan	Fan	Adjustable Plastic
Pressure Limiting Valve:	No	No	No
Shoulder Straps:	Rubber Shoulder Pads	Shoulder Pads	No
Wand Storage:	No	No	Wand Clip
Agitation:	With Kit 34 (optional)	With Kit 34 (optional)	No

* Permanent damage will occur if sprayer is not cleaned properly after each use with Chlorine

MASTER MFG. SPRAYERS

Part # SSC01-0251A-MM

- 25 Gallon Spot Sprayer
- Chemical resistant polyethylene tank
- 12V connection cables
- Adjustable cone spray nozzle
- Ideal for applying insecticides and herbicides
- 18" lever handgun with 15' hose
- Shurflo 1.8 GPM pump



Part # SLC-11-015A-MM

- 15 Gallon Trailer Sprayer
- Chemical resistant polyethylene tank
- Steel powder coated frame with 10" pneumatic tires
- Shurflo 1.8 GPM pump
- 18" lever handgun with 15' hose
- Ideal for applying insecticides and herbicides
- 5" fill lid with tether
- 84" boom spray coverage
- 12V connection cables with switch
- Adjustable cone spray nozzle



SPRAY GUNS

Part # SG1100

- Lawn Spray Gun
- Light weight non-metal construction
- Pressure gauge outlet
- Accepts GNC and Lesco nozzles
- Nozzles contain stainless steel inserts for extended life
- Trigger protection
- Operating pressure range of 0-300 PSI



NEW!

Part # SG1102

- Lawn Spray Gun with Precise Spot Spray
- For use with dual line hose only



NEW!

Part # SG1103

- Metal Spray Gun - Heavy Duty Commercial
- Stainless steel trigger
- Adjustable spray pattern - cone to mist
- For pesticide, tree and shrub spraying
- 0-20 GPM
- Pressure: 0-800 PSI



NEW!

Part # SG1104

- Do-All Kit with Metal Spray Gun and Nozzles
- Includes lightweight SG857 spray gun and 6 nozzles



NEW!

Part # SG1105

- Mighty Mag Tree Gun
- Spray pattern adjusts from a jet stream to a fine mist cone
- Grip assembly is the same as SG853
- 0-800 PSI
- 0-48 GPM
- Comes with 3 nozzles: #8, #12 and #14



NEW!

CHAPIN BACKPACK SPRAYERS

Part # 64800

- Professional Diaphragm Pump Sprayer for Wettable Powders
- Diaphragm for wettable powders
- 4" large diameter opening
- Strainer/filter basket
- Cushion grip spray handle
- Adjustable padded shoulder with waist straps
- Brass fan, poly fan and poly cone nozzles included
- Right and left hand use
- 4 gallon true capacity

\$69.00 ea. or \$59.00 ea. for 2 or more

NEW!

Part # 61700

- SureSpray™ Deluxe Backpack Poly Sprayer
- 4 gallon
- This backpack sprayer is perfect for large spraying jobs
- Comfortable straps let you lug 4 gallons of solution around with little exertion.
- 4in. mouth makes refilling easy
- The in-tank fillers help prevent clogging
- Leak-proof cap with nitrile seals

\$59.00 ea. or \$49.00 ea. for 2 or more

NEW!



Part # 64800



Part # 61700

NOZZLES

For SG853 spray gun and SG855R spray gun kit

Part # SN130

- 1 - 3 GPM

NEW!

Part # SN350

- 3 - 5 GPM

NEW!

Part # SN370

- 5 - 7 GPM

NEW!

Part # SN7100

- 7 - 10 GPM

NEW!



For SG857 lawn spray gun and SG855K spray gun kit

Part # SN150

- 1 - 3 GPM; blue

NEW!

Part # SN160

- 3 - 5 GPM; yellow

NEW!

Part # SN170

- 4 - 7 GPM; green

NEW!



HOSES

Part # 38300

- Pliovic 200 lawn spray hose
- 300'
- Burst Rating/PSI: 250/600
- Size: 3/8"

NEW!



Part # 12300

- Pliovic 200 lawn spray hose
- 300'
- Burst Rating/PSI: 250/600
- Size: 1/2"

NEW!



Part # HP38300

- Pliovic high pressure lawn tree spray hose
- 300'
- Burst Rating/PSI: 2400/800
- Size: 3/8"

NEW!



Part # H12300

- Clear braided PVC hose
- 300'
- Burst Rating/PSI: 200
- Size: 1/2" ID x 3/4" OD

NEW!



EARTHWAY PROFESSIONAL SPRAYERS

Part # S15

- Fully Assembled, epoxy powder coated chassis
- 5gal/22 liter tank capacity with coverage from 3,300 - 8,800 square feet *
- Easy to push high-speed gearbox
- Ground-driven pump
- New Adjustable Height Nozzle for variable spray width
- Self-Agitating tank
- 10"/25cm Stud type pneumatic tires on rustproof poly rims
- NEW EarthWay exclusive - No Load pull-back system
- 2-mode valve for Spray or Transport operation

NEW!



Part # S25

- 6.6gal/25liter Tank capacity with coverage from 3,000 - 11,600 square feet *
- Ground driven pump
- New Adjustable Height Nozzle for variable spray width
- Self-Agitating Tank
- 13"/33cm Stud type pneumatic tires on rustproof poly rims
- NEW EarthWay exclusive - No Load pull-back system
- Heavy-Duty Epoxy Powder Coated "Diamond" Chassis
- 3-position height adjustable handles for comfortable use
- 2-mode valve for Spray or Transport
- Easy to push high-speed gearbox

NEW!



Part # S25-77000

- Spray Gun Kit
- Designed for precise spot spraying
- For S25 and S15 sprayers

NEW!

**NO
ART
AVAILABLE**

EARTHWAY PROFESSIONAL 50 LB. ROUND BROADCAST SPREADERS

Part # C22HD

- 50 lb/23kg Hopper capacity
- Rustproof poly construction
- EV-N-SPRED Pro Dual Port Adjustable Shut-Off System
- 250 lb/113 kg load bearing capacity - what the frame will support
- 13"/33cm diameter turf tires on rust-proof poly rims
- Twin-Tube Epoxy Power Coated Professional Chassis
- Debris screen to prevent clumps from cloggin the shut-off screens
- Super-Duty gearbox for long life
- Ergonomic upper handle for easy control



Part # C22HDSS

- Twin tube stainless steel professional chassis
- Rustproof poly construction
- EV-N-SPRED Pro Dual Port Adjustable Shut-Off System
- 250 lb/113 kg load bearing capacity - what the frame will support
- 13"/33cm diameter turf tires on rust-proof poly rims
- Twin-Tube Epoxy Power Coated Professional Chassis
- Debris screen to prevent clumps from cloggin the shut-off screens
- Super-Duty gearbox for long life
- Ergonomic upper handle for easy control



Part # 77001

- Heavy Duty Rain Cover
- Fits C22HD and C22HDSS Spreaders



EARTHWAY PROFESSIONAL NYLON BAG SEEDER/SPREADER

Part # 2750

- 20 lb. capacity
- Equipped with zippered top for easy loading
- Spread width 8" - 12"
- Contoured base and padded shoulder strap to fit comfortably on hip
- Long crank handle for complete control

NEW!



EARTHWAY PROFESSIONAL 100 LB. SQUARE BROADCAST SPREADERS

Part # C24HD

- 100 lb/45 kg hopper capacity
- Rustproof poly construction
- EV-N-SPRED Pro Dual Port Adjustable Shut-Off System
- 250 lb/113 kg load bearing capacity - what the frame will support
- 13"/33cm diameter turf tires on rust-proof poly rims
- Twin-Tube Epoxy Power Coated Professional Chassis
- Debris screen to prevent clumps from cloggin the shut-off screens
- Super-Duty gearbox for long life
- Ergonomic upper handle for easy control



Part # C24HDS

- Twin tube stainless steel professional chassis
- Rustproof poly construction
- EV-N-SPRED Pro Dual Port Adjustable Shut-Off System
- 250 lb/113 kg load bearing capacity - what the frame will support
- 13"/33cm diameter turf tires on rust-proof poly rims
- Twin-Tube Epoxy Power Coated Professional Chassis
- Debris screen to prevent clumps from cloggin the shut-off screens
- Super-Duty gearbox for long life
- Ergonomic upper handle for easy control



Part # 77002

- Heavy Duty Rain Cover
- Fits C24HD and C24HDS Spreaders



Part # 217OP

- 100 lb. Broadcast Spreader
- Square poly hopper
- Superior performance
- Economical price
- 3-hole drop system
- 175 lb. transport capacity
- 3 position, adjustable handle
- 13" turf tires on rust proof wheels

NEW!



Part # 60166R

- 3 Side Deflector Kit
- Fits round and square Earthway Spreaders



RECOIL STARTER ASSEMBLIES

Part # P31060

- Starter recoil assembly
 - For new style GX340 and GX390 series engines
- Replaces **Honda 28400-ZE3-W01ZA**



Part # P31069

- Starter recoil assembly
 - GXV260 series engines
- Replaces **Honda 28400-ZE6-003ZA**, code 3352747



Part # P31066

- Starter recoil assembly
 - For GCV130 and GCV160
- Replaces **Honda 28400-ZMO-013ZA**



Part # P31053

- Starter recoil assembly
 - For G150, G200, GX110, 120, 140 and 160 engines
 - Old style with metal dog
- Replaces **Honda 28400-ZE1-003ZA**



Part # P97292

- Starter recoil assembly
 - For GX110, 120, 140, 160 engines
 - New style with 2 plastic starter dogs
- Replaces **Honda 28400-ZH8-023ZG**



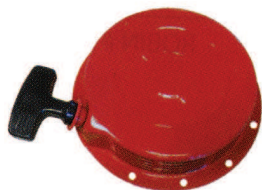
Part # P31075

- Starter recoil assembly
 - New style with metal dogs for GX120, GX160
- Replaces **Honda # 28400-ZH8-013ZA**



Part # P31059

- Starter recoil assembly
 - Use on GX340 engines
- Replaces **Honda # 28400-ZE8-8112A**



RECOIL STARTER ASSEMBLIES continued

Part # P31070

- Starter recoil assembly
 - For GXV140 and GXV160
- Replaces **Honda 28400-ZG9-803**, **28400-ZG9-802**, code 6387351
- NEW!**



Part # P31049

- Starter recoil assembly
 - Fits GX240 engines
- Replaces **Honda # 28400-ZE2-W01ZA**
- \$38.98 ea.**



Part # P31076

- For GX24 and GX25
 - Starter recoil assembly
- Replaces **Honda 28400-ZOH-003**
- NEW!**



Part # P31071

- Starter recoil assembly
 - For TD40 and TD48 models
- Replaces **Kawasaki 49088-2166**



Part # P31072

- Starter recoil assembly
 - G3K and G4K
- Replaces **Komatsu and Zenoah**



Part # P31073

- Starter recoil assembly
 - Model TL26
- Replaces Mitsubishi, Kaaz, Green Machine



Part # P31074

- Starter recoil assembly
 - TL33, TL43 and TL52 models
- Replaces Mitsubishi, Kaaz, Green Machine



RECOIL STARTER ASSEMBLIES *continued*

Part # ST13582

- Starter recoil assembly
- Fits models KM90, KM100, KM110, FS90, FS100, FS110, FS130, FC90, FC100, FC110 and FC130

Replaces *Stihl* 4180-190-4000

NEW!



Part # ST13529

- Starter recoil assembly
- Fits models BR500, BR550, BR600

Replaces *Stihl* 4282-190-0300A

NEW!



Part # ST13580

- Starter recoil assembly
- Fits models BBR320, BR340, BR380, BR400, BR420 blowers

Replaces *Stihl* 4203-190-0405

NEW!



Part # 155545

- Starter Assembly
- Fits TS400
- Includes cover, pulley, dog, rewind, spring cord and handle

Replaces *Stihl* 4223 190 0401



STARTER SPRINGS

Part # ST12914

- Fits models FS72, FS74, FS76 trimmers
- Fits HS72, HS74, HS76 hedge trimmers
- Fits FC72 edgers,
- Fits BG72, BG75 blowers

Replaces *Stihl* 4133-1295-1600

NEW!



Part # ST42821950300

- Recoil Spring
- Fits TS410, TS420 cut off saws

Replaces *Stihl* 4282-195-0300

NEW!



STARTER SPRINGS *continued*

Part # P44925

- Starter Spring
- Fits TS400

Replaces *Stihl* 422323 190 0600



Part # 110194

- Recoil spring
- Fits BR550

Replaces *Stihl* 4282-190-0600



Part # ST42821950200

- Recoil Spring
- Fits BR500, BR550, BR600 blowers

Replaces *Stihl* 4282-195-0200

NEW!



Part # 110195

- Rewind spring
- Fits FC85 trimmer

Replaces *Stihl* 4133-195-1600



Part # 110190

- Recoil Starter Assembly
- Fits FS85 trimmer

Replaces *Stihl* 4137-190-4000



STARTER PULLEY

Part # P44928

- Starter Pulley
- Fits TS400

Replaces *Stihl* 4223 190 1001



STARTER HANDLES

Part # P31907

- Mitten grip handle
 - Fits Toro, Ariens and others
 - For lawnmowers and snowblowers
- Replaces **B&S 398101**



Part # H10

- Starter Handle
- NEW!**



Part # P31911

- Starter handle
 - For G100
- Replaces **Honda 28461-ZGO-004**



Part # P31912

- Small handle
 - For GX110, GX120, GX140, GX160 and GX240 models
- Replaces **Honda 28461-ZH8-003**



Part # P31109

- Starter handle
- For GCV135 and GCV1160 model engines



Part # P31100

- Starter handle
 - Use on trimmers and saws
- Replaces **Echo 17722801110;**
J Deere PT2637



Part # P31910

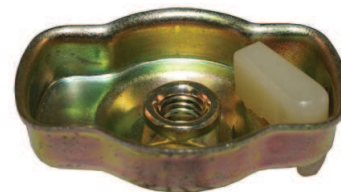
- Rubber handle
 - For larger horsepower engines
- Replaces **Honda 28461-ZE1-003**



STARTER PAWL ASSEMBLY

Part # EC13172

- Replaces **Echo A052000160**, and Stihl
- NEW!**



STARTER ROPE

Part #	Size	Length
A427	#3	200'
A428	#3-1/2	200'
A401	#4	200'
A402	#4-1/2	200'
A403	#5	200'
A404	#5-1/2	200'
A405	#6	200'



Rope Applications:

Size 3 & 3-1/2	Trimmers and small 2-cycle equipment
Size 4 & 4-1/2	Chain saws and larger 2-cycle equipment
Size 5 & 5-1/2	4-cycle homeowner push type mowers
Size 6	Larger 4-cycle equipment

Part # P44922

- Starter Rope
 - Fits TS400
- Replaces **Stihl 0000 930 2268**



PERFORMANCE STARTERS

Part # B595

- Single cylinder
- Teeth: 16

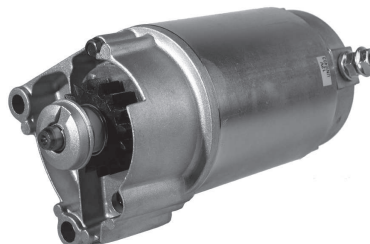
Replaces **B&S 490420, 497595, 691262, 394805**



Part # B596

- 14, 16 & 18 HP twin cylinder engines
- Teeth: 16

Replaces **B&S 49759**



Part # B148

- 18-20.5 HP twin cylinder engines only
- Teeth: 16, 4-3/8" housing length

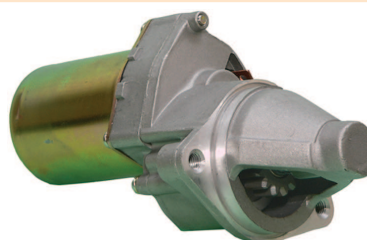
Replaces **B&S 498148, 495100, 399928**



Part # HN740

- Fits models GX340, GX390
- 11HP & 13 HP engines
- Teeth: 14

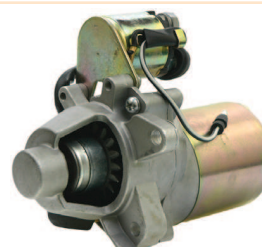
Replaces **Honda 31210-ZE3-013**



Part # HN741

- Fits model GX160, 5.5 HP

Replaces **Honda 31210-ZE1-023**



Part # HN733

- Fits models GXV670, 620, 610, 24 HP

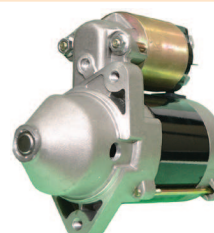
Replaces **Honda 31200-ZJ4-831**



Part # KA728

- Fits FC401V, FC400V, FC420V

Replaces **Kawasaki 21163-2073**



PERFORMANCE STARTERS continued

Part # KA729

- Fits FD620D, FC661D
- Replaces *Kawasaki 21163-2101*



Part # KA730

- Fits FH451V, FH500V, FH531V, FH541V, FH580V, FH601D, FH601V, FH641D, FH641V, FH680D, FH680V, FH721D, FH721V
- Replaces *Kawasaki 21163-7010, 21663-7001*



Part # KA733

- Replaces *Kawasaki 21163-7031*
NEW!



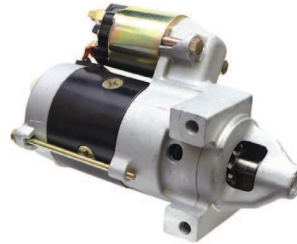
Part # KA735

- Replaces *Kawasaki 21163-2120*
NEW!



Part # P12279

- Fits FH541V - FH721V
- Replaces *Kawasaki 21163-7014, 21163-7002, 21163-7026, John Deere AM133636*



Part # P12430

- Fits FH541V - FC540V
- Replaces *Kawasaki 21163-2093; John Deere AM108615*



Part # P12254

- Fits FB460 engines
 - Use on John Deere 130 and 160 lawn tractor LX176, SX95
 - 12 volt
- Replaces *Kawasaki 21163-2081, 21163-2070; John Deere AM107206*



PERFORMANCE STARTERS continued

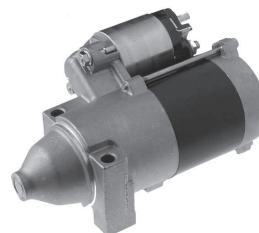
Part # SP12130

- Starter solenoid
- Replaces **Kawasaki 270-2122**



Part # K714

- Solenoid shift style
- Fits models CH12.5, 13, 14, 15, 18, 20, 22, 25, CV12.5, 15S, 16, 18, 20, 22, 25
- Replaces **Kohler 12-098-03, 12-08-03S, 24-098-01, 24-098-01S, 25-098-09S**



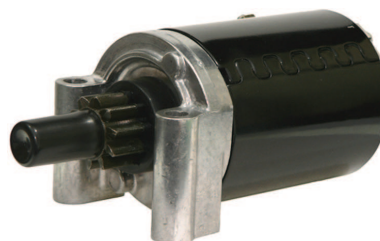
Part # K710

- Fits models CH11, 12.5, 13, 14, 15, CV15
- Use after serial no. 241200004
- Replaces **Kohler 12-098-12, 12-098-12S, 12-098-19, 12-098-19S, 12-098-21S, 12-098-14S**



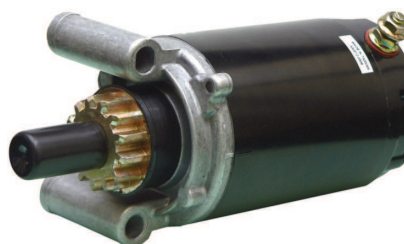
Part # K722

- Fits models CV12.5, 13, 15, 16 Command vertical engines
- Replaces **Kohler 12-098-10, 25-098-04, 25-098-04S, 25-098-07**



Part # K715

- Fits models CH14, CV11, 12.5, 13, 14, 15 & 16
- Replaces **Kohler 12-098-20, 12-098-20S, 12-098-13, 12-098-13S, 12-098-15S, 12-098-22S**



Part # K718

- Fits models K17, 19, 21, M18, 20, MV20
- Replaces **Kohler 52-098-06, 52-098-13, 52-098-13S**



PERFORMANCE STARTERS continued

Part # K702

- Fits model # M10, M14 & M16 series engines
- 10, 14 & 16 HP engines
- 10 tooth gear

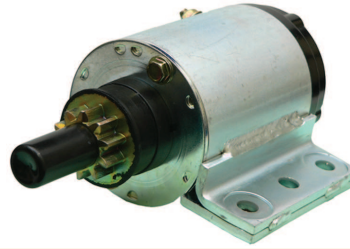
Replaces **Kohler 41-098-04, 41-098-06, 41-098-06S**



Part # K704

- Fits model K321 & K341 series engines
- 14 & 16 HP single cylinder engines
- 10 tooth gear

Replaces **Kohler 45-098-09, 45-098-09S, 237534, 450-098-05, A237510, 45-098-07**



Part # K707

- Fits model # MV16 & M18
- 16 & 18 HP twin cylinder engines
- 9 tooth gear

Replaces **Kohler 52-098-12, 52-098-03, 52-098-09**



Part # SP12709

- Electric Starter
- Fits Courage Single

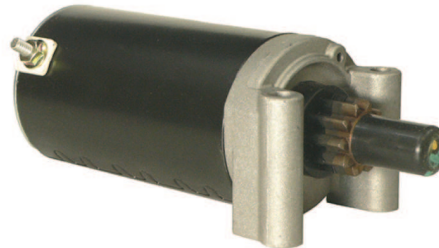
Replaces **Kohler 20-098-05S, 20-098-01S**
NEW!



Part # SP12710

- Electric Starter
- Fits Courage V-Twin

Replaces **Kohler 32-098-01S**
NEW!



Part # SP12130

- Starter solenoid

Replaces **Kohler 52-453-02S**

